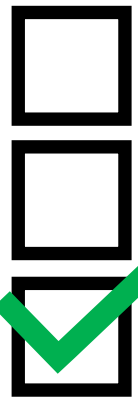


COURSE REPRESENTATIVES



Course Reps are elected by students on their course

Students

Feedback to



Who present the feedback to...



Represent students at Staff Student Liaison Committees (SSLC), or other student representative meetings, working in partnership with staff to improve students' course and academic experience.



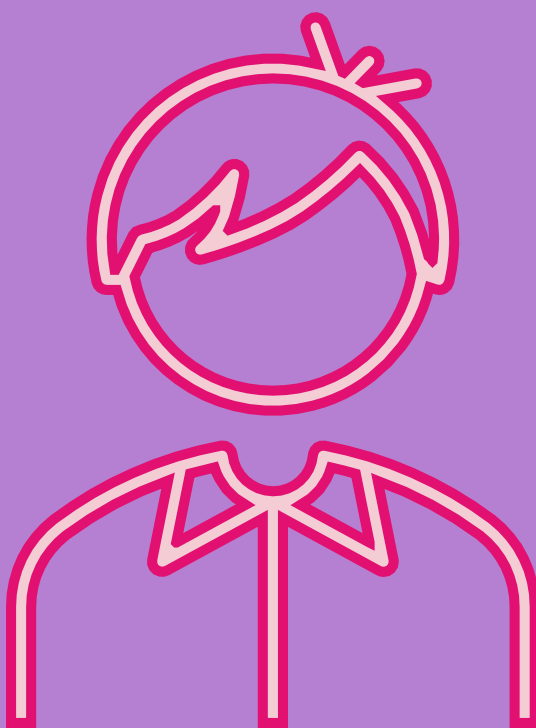
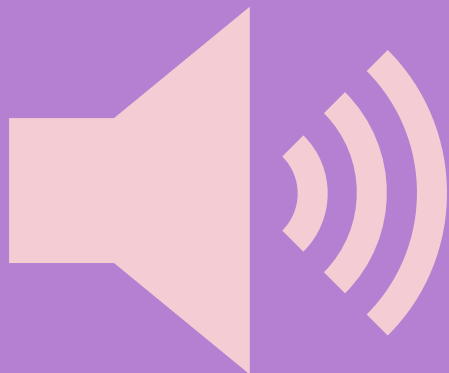
Engages with course design, delivery and enhancement.

Department Reps

DEPARTMENT REP

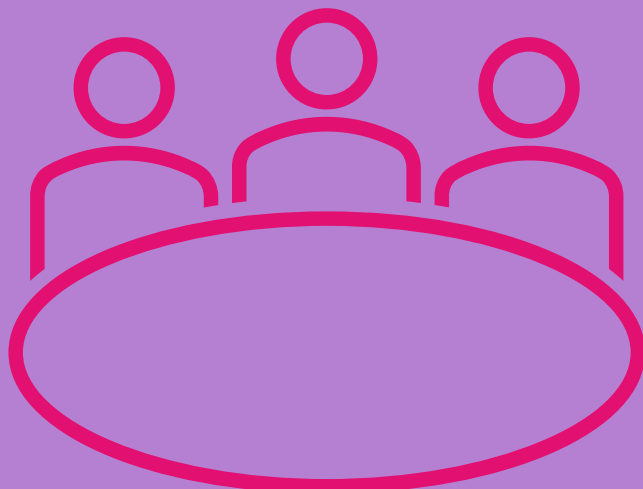


Department Reps gather feedback from Course Reps and then raise issues with staff, make suggestions for improvements and help make positive changes in their department.



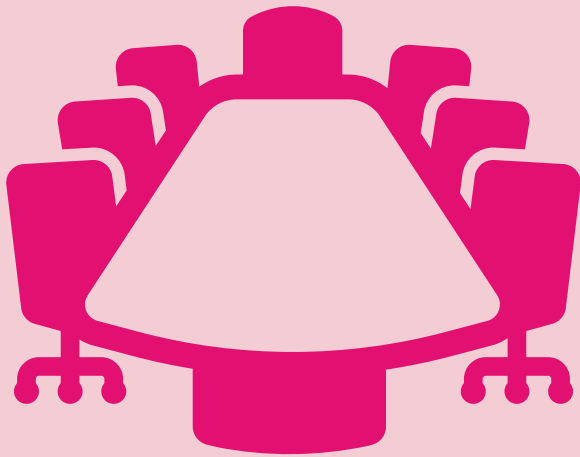
They work closely with SU College officers to collectively represent the student voice at college and department level.

Department Reps meet regularly with their Head of Department and the departmental leadership team. They report to the University & Students' Union monthly and attend regular meetings to identify actions and development needs.



They are part of the constitution of Department Boards and will sit on the College Student Boards.

STUDENTS' UNION COLLEGE OFFICERS



There are 6 full-time Students' Union sabbatical officers. They are the President, Wellbeing Sport & Physical Activity, International Students Officer and 3 College officers. College Officers will raise cross-campus issues at Strategic University Committees when things cannot get resolved at department level, or when things have University-wide implications.



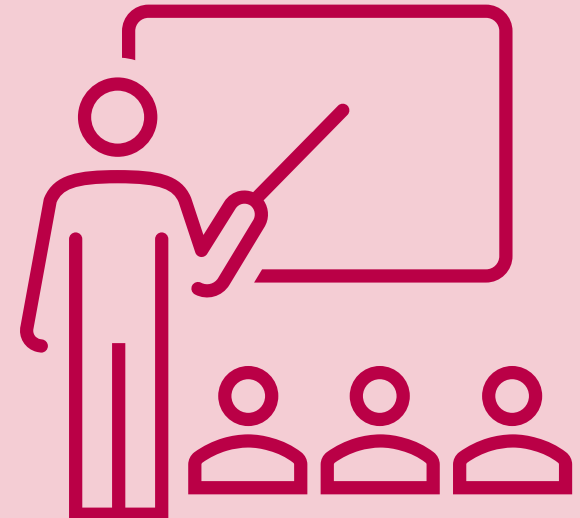
Encourage student involvement and engagement throughout the College in partnership with the University and Students' Union staff.



Part-time Representatives support students with protected characteristics, such as

Disability

Mature Students



Work alongside other reps and work closely with academics to improve the experience for students.

BAME

STUDENTS' UNION OFFICERS

The Students' Union Officer team consists of 6 Officers, including 3 College Officers and the 3 listed below.



1. International Students' Officer

- Represents students from outside of the UK
- Promotes opportunities for home students to engage with international opportunities.
- Represents students on transnational courses

2. Wellbeing, Sport & Physical Activity Officer

- Responsible for engaging with the University Wellbeing strategy.
- Represents wellbeing related issues at an institutional level.
- Ensuring student input is integrated into the University's Sport and Physical Activity programme.

3. Students' Union President

- Brings together issues from across the Colleges at an institutional level.
- Acts as the primary representative of students on key University Committees.
- Leads the elected officer team and Students' Union reps to ensure the delivery of their objectives.

The team is supported by Voluntary Part Time Reps who provide representation to students with protected characteristics or other specialist interests within the University.

These roles are voluntary and are elected cross-campus.

Officers are accountable to the student body through the Union council

WHERE DOES MY FEEDBACK GO

GO

Course Rep

And present it to Department Reps



They will collect your feedback

They can be found on the Students' Union website

Chat to your Course Rep

Course feedback is actioned here

Department Rep

Collect feedback for their relevant Department



Represent the Student Voice at Department level



Regularly meet with Department Leaders

Departmental feedback is actioned here

SU College Officers

Raise cross-campus issues at Strategic University Committees



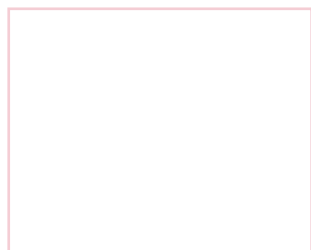
Work closely with academics to improve the experience for students.

Move forward for University-wide feedback

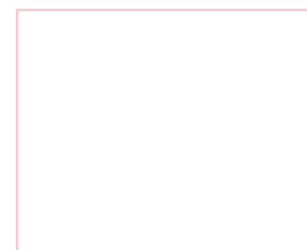
Encourage student involvement and engagement

Students' Union Officers

These roles are elected cross-campus



Provide independent representation to students



Represent your feedback to Senior Leaders of the University