

Staying in Sheffield over Christmas 2014

Vacation Programme

Sheffield Hallam University

Sheffield Hallam University

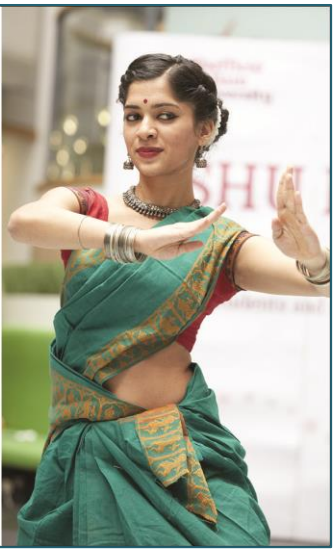
Get ready for SHU Fest 2015 2-8 March

Join us for a massive week-long festival packed with fun and exciting events showcasing the talent and diversity of our students and staff.

Calling for participants

- Contact us by 31 January 2015 if you
- can sing, dance, play an instrument or have any other talents
- want to organise an event and boost your CV

shu.ac.uk/shufest



Sheffield Hallam University

Become a Culture Connect mentee

Learning through sharing

Are you a new international student? This is a great way to learn about other cultures, improve your language skills and settle into UK life.

Go to facebook.com/CultureConnectSHU



Sheffield Hallam University

Make friends from 120 countries

Learn about other cultures and stand out to employers.

Join SHU GoGlobal at shu.ac.uk/global



For more information contact

International Student Support
Student Services Centre Reception
Owen Building, City Campus
0114 225 4127
internationalsupport@shu.ac.uk
facebook.com/groups/SHUGoGlobal

Staying in Sheffield over Christmas

Many of you will be staying in Sheffield over the festive season, so we have put together a special programme of events to help you make the most of your time here. There are a wide range of activities – from shopping trips to walks in the Peak District – so you can celebrate Christmas in style and make friends! Join **SHU GoGlobal** at facebook.com/groups/SHUGoGlobal for event updates throughout the year.

Sunday 7 December, 8am–7pm **Lincoln Christmas Market Trip** **Meet outside the HUBS**

Visit England's biggest Christmas market in the historic city of Lincoln. There will be over 250 stalls set against a backdrop of the beautiful Cathedral. Tickets are available in advance from the HUBS and cost £15.

Wednesday 10 December, 1pm–1.45pm **University Carol Service** **Hallam Hall, level 6**

Musical items from Hallam Harmonies, Sonia Palmer and Jim Darnill. Followed by light refreshments.

Wednesday 10 December, 5pm–7pm **Conversation Club** **Owen 942**

Conversation Club is one of the best ways to meet new friends in Sheffield. Come along to this special Christmas Conversation Club with Mince Pies, Christmas games and lots of opportunities to meet new people.



Friday 12 December, 6pm–8pm **Culture Connect Christmas Event** **Heartspace, Level 2**

Santa Claus is coming to SHU! Join Culture Connect, Sheffield Hallam's biggest peer mentoring scheme, for a magical celebration. There will be interactive games, wonderful prizes and a live band. We have a photo corner with exciting accessories and you can ask our professional photographer to capture those memorable moments with your friends. This is a free event open to all students – you do not have to be a member. A fantastic way to meet people from different countries!



Sunday 14 December, 9.30am–2pm **Christmas walk into the Peak District** **Meet at the Main University Entrance**

Wrap up warm and join us for a walk in the beautiful countryside surrounding Sheffield. This walk will be led by one of our British alumni, please wear sensible shoes and bring some money for snacks.

Sunday 14 December, 6pm–9pm **Candle Lit Carol Concert** **Meet at the Main University Entrance**

Experience a traditional Christmas carol service in the community. There will be a choir singing traditional songs, mince pies and mulled wine. This is a free event, please meet us at the main University entrance and we will go together.

Friday 19 December, 6pm–9pm **Basketball Game – Sheffield Sharks Vs Glasgow Rocks** **Meet at the Main University Entrance**

Come and cheer on the Sheffield Sharks basketball team for only £5. Tickets must be bought in advance from the Student Services Centre, level 5, Owen Building. On the day of the game meet our student crew and we will take the tram to the game.

Saturday 20 December, 7pm–10pm **Ice Skating** **Meet at the Main University Entrance**

Meet new friends at one of our regular ice skating events. Whether you are an accomplished ice skater or have never tried it before – come along, everybody is welcome. We will be taking the tram to Ice Sheffield, transport and entry costs (including the hire of skates) is approximately £7.

Tuesday 23 December, 5pm–7pm **Film Screening**

The Void, Level 1, Owen Building

Film screening of the Christmas classic Love Actually. Free popcorn will be served at the event.

Friday 26 December, 10am–5pm **Boxing Day Sales**

Meet at the Main University Entrance

A traditional British activity on Boxing Day is to go to the sales. We will be going to Meadowhall so please bring some money for the tram and for your shopping!

Monday 29 December, 9.30am–5pm **Trip to Nottingham**

Meet at the Main University Entrance

Join us for a trip to the historic city of Nottingham, home of Robin Hood and the impressive Nottingham Castle. You are advised to buy train tickets in advance and then meet our student crew.

Friday 2 January, 9.30am–3pm **Trip to Graves Park**

Meet at the Main University Entrance

Join us on a trip to Sheffield's largest park with formal gardens, an ancient woodland and a farm. We will be taking the bus to the park which costs approximately £4.

The University will be closed during 25 December – 1 January

Learning Centres will remain open 24/7, but they will operate a reduced service during the Christmas period.

- You must bring your SHUcard.
- The Helpdesk will be closed but you will have access to books and journals, PCs, printing and copying etc.
- There will be an out of hours service on 0114 225 3333 to get advice.
- Catering will not be available but there are vending machines.
- Security staff will help with immediate queries such as filling up printers.

